

# Beat intruders at your perimeter with the RotaSpike anti climb barrier

## The ultimate deterrent

With its fearsomely sharp rotating steel blades on a steel tube, RotaSpike offers insurmountable protection against intruders.

## Easy to install almost anywhere!

RotaSpike can be supplied with brackets that are available for fixing above any type of fence, gate or wall. This makes it easy to utilise on buildings, to protect vulnerable points, for example upstairs windows where it can be possible for intruders to gain access from adjacent buildings or roofs.

## Security that's finished to last

RotaSpike is manufactured entirely from hot-dip galvanised steel. It is also available with an additional durable coating in green, black, white, blue or grey (other colours on request). So it stays looking not only fierce, but good too.

## Specification

Available in: 2.0 metre or 6.0 metre lengths

Inner Tube: 41.5mm diameter

Blades: 90mm long rotating on outer tube  
48.3mm diameter

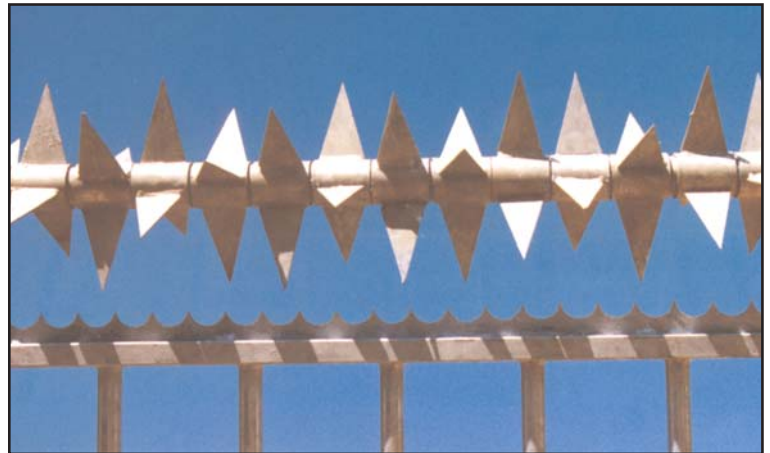
Material: Steel, hot-dip galvanised

Fixing: Brackets at 3.0 metre centres for vertical runs, 2.0 metre centres for horizontal runs

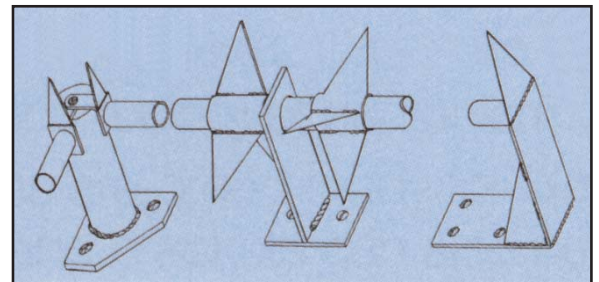


**Note: Appropriate warning signs must be displayed where this product is installed.**

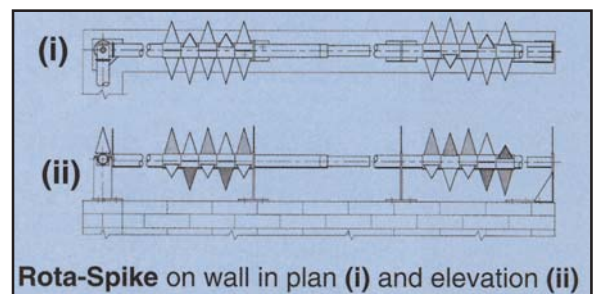
It is strongly recommended that signs should be displayed at, at least at 3 metre intervals and must also be clearly visible from any approach point to the protected fence, gate or wall.



in use - RotaSpike installed over a fence topped with Razor Comb



left to right: corner bracket / interim bracket / end bracket



RotaSpike on wall in plan (i) and elevation (ii)



Insight Security, Unit 2, Cliffe Industrial Estate, Lewes, East Sussex, BN8 6JL

tel: 01273 475500 fax: 01273 478800, [www.insight-security.com](http://www.insight-security.com)

