

## Around 50% of businesses / organisations in the UK will be burgled this year

- Over 70% of those burgled are likely to be re-burgled within a few months
- The average cost of a computer theft is approximately £25,000  
... but what cost do you put on the hassle?

- Almost 70% of businesses that lose their main computing facilities for more than one week fail within 18 months

These are not simply scare stories but statistical facts, everyone is at risk!



**Your equipment is at RISK!** however with a little thought and modest expenditure there are many things you can do to minimise the threat.

Installing security measures in a layered approach will normally prove the most cost effective option. Each layer may be designed to delay or detect the thief, to reduce the value of the items stolen, or even to increase the risk of the thief being caught whilst trying to dispose of the goods.

### Physical anti theft protection products

- Cable based security systems
- Lock down plates and rail systems
- Security cabinets and enclosures



This type of product is designed to prevent or delay any attempt at unauthorised removal of equipment from its designated location. The Insight CAB-L-OCK and STRONGHOLD product range offers effective, low cost protection for your PCs and other equipment and our products enjoy an enviable reputation for practicality, safety and operational convenience.



Users include insurance companies, Police, high street banks and other major corporate clients, schools and universities, most local authorities and NHS Trusts.

### Protecting computers in harsh environments

Designed to protect equipment against the ingress of dust, grime or even fluids, these units are frequently used within the food preparation industry, in warehouses, manufacturing areas, or any other potentially dirty environment. Units can be built to IP54, IP65 or IP66 standard as specified by the client, and are finished as standard in a robust powder coat paint finish (as an option, units can be manufactured from stainless steel).



### Alarm products

Stand alone 'movement sensor' alarm units can be installed inside of equipment casings or bonded to the external equipment surface. A high pitched oscillating siren sounds in the event that the equipment is moved whilst the alarm is armed.



### Marking and identification systems

Thieves do not like handling stolen goods that can be easily identified, so marking your equipment can help to deter theft and will of course aid identification of the rightful owner of items which are stolen and subsequently recovered. Our product range includes covert and visible systems, chemical etching, labels and engraving systems, microdot marking, 'DNA spray' type systems and software based marking.



## CAB-L-OCK cable based lock down systems

Whilst chaining down your computers could be an option, most users would agree that the CAB-L-OCK approach to theft deterrence is considerably more practical and appealing.

**Cost effective** The popular CAB-L-OCK range of lock down products provide a practical, cost effective means of tackling opportunist theft and are easily affordable for widespread use within any organisation. They also prevent the unauthorised relocation of equipment making them a valuable aid to in-house asset management.

**Quick and easy to install** A choice of 'off the shelf' standard packs are available, each being designed to offer a solution for a particular type of requirement, whilst for maximum flexibility and convenience, customised packs can also be supplied. All CAB-L-OCK packs are supplied with full installation kit and simple to follow instructions.



**Protecting your investment** As all components can be purchased separately, when you change your PCs (or office furniture), simply purchasing replacements for those components attached to the items disposed of will enable you to re-use your CAB-L-OCK systems.

**Choice** of 'bond on' or 'mechanical type' fixings to provide a cable attachment point on items to be secured, with a comprehensive range of additional purpose designed components to provide effective cable anchor points, protect against unauthorised access to PC internals (chips, etc.) and deter theft of ancilliary items i.e. mouse, keyboard, speakers.

### **CAB-L-OCK – your guarantee of quality and value for money**

Genuine CAB-L-OCK products have been field proven over many years, enjoy an excellent reputation with users and should not be confused with inferior imitations.



## CAB-L-OCK executive cable packs

A popular choice with users where aesthetics feature high on the priority list or where the integral locking point is preferred to padlock locking, these systems offer the ideal solution.

prod ref	description	cable length	lock type
<b>AD 4011</b>	secures 1 item to a desk anchor point	0.95 metres	integral
<b>AD 4021</b>	secures 2 items to a desk anchor point	0.95 metres	integral
<b>AD 4022</b>	secures 2 items to a wall / floor anchor	0.95 metres	integral

*note: all packs include easy follow instructions and full installation kit*

### options include

alternative length cables, keyed alike lock suite (simplifies key management where multiple systems are installed), supplementary security products such as caselock, cable trap and screw trap.

[\(See CAB-L-OCK components section page 56\)](#)



desk anchor



wall anchor

## CAB-L-OCK budget cable packs

### Budget cable pack 1

This versatile pack incorporates padlock locking and provides the means to secure two items of equipment to an immobile object via the universal wrap around fixing.

The pack also includes a cable trap, which provides the means of securing low cost peripherals such as the mouse, keyboard, or webcam to the security cable via their electrical connection cable.

#### options include

alternative length cable, keyed alike padlocks, supplementary products. [\(See components section page 56\)](#)

prod ref	description	cable length	lock type
<b>AD BCP01</b>	secures 2 items via wrap around fixing	1.45 metres	padlock



### Budget cable pack 2

This super pack incorporates padlock locking and provides the means to secure two items of equipment to a desk anchor point fixing.

It also includes a cable trap, which provides the means of securing low cost peripherals such as the mouse, keyboard, or webcam to the security cable via their electrical connection cable.

#### options include

alternative length cable, keyed alike padlocks, supplementary products. [\(See components section page 56\)](#)

prod ref	description	cable length	lock type
<b>AD BCP02</b>	secures 2 items to desk anchor point	0.95 metres	padlock



**Budget cable pack 3**

This super pack incorporates padlock locking and provides the means to secure two items of equipment to a wall / floor anchor point fixing.

It also includes a cable trap, which provides the means of securing low cost peripherals such as the mouse, keyboard, or webcam to the security cable via their electrical connection cable.

**options include**

alternative length cable, keyed alike padlocks, supplementary products.



prod ref	description	cable length	lock type
<b>AD BCP03</b>	secures 2 items to wall / floor anchor point	1.45 metres	padlock

**Travel cable pack 1**

The ideal pack for protecting your luggage, golf bag, etc. in the boot of your car!

**options include**

alternative length cable, supplementary products.



prod ref	description	cable length	lock type
<b>AD 4261</b>	secures luggage / briefcase / golf bag	1.45 metres	padlock

**CAB-L-OCK mechanical fixings, re-usable cable packs**

**Mechanical fixings pack 1**

This versatile pack incorporates padlock locking and provides the means to secure the PC and its monitor to an immobile object via the universal wrap around fixing.

It also includes a cable trap, which provides the means of securing low cost peripherals such as the mouse, keyboard, or webcam to the security cable via their electrical connection cable.



universal wrap around locking



monitor trap



expansion slot bracket



cable trap

**options include**

alternative length cables, keyed alike lock suite (simplifies key management where multiple systems are installed), supplementary security products such as caselock, cable trap and screw trap.

[\(See components section page 56\)](#)

prod ref	description	cable length	lock type
<b>AD UMEC01</b>	secures monitor, processor & keyboard	1.45 metres	padlock

**Mechanical fixings pack 2**

This versatile pack incorporates a two purpose designed re-usable cable attachments of different lengths which screw to the threaded pillars of any spare serial or parallel port (screws supplied). The security cable is passed through the attached fitting (preventing access to the securing screws until the cable is withdrawn), the oversize fitting on the trailing end of the security cable prevents it pulling right through the fitting, whilst the leading end is locked to any suitable bracket or anchor point via the universal wrap around fixing.

**options include**

alternative length cables, keyed alike lock suite (simplifies key management where multiple systems are installed), supplementary security products such as caselock, cable trap and screw trap.

[\(See components section page 56\)](#)



AD UMEC02



universal wrap around locking

prod ref	description	cable length	lock type
<b>AD UMEC02</b>	secures PC via serial / parallel port connectors	1.45 metres	padlock



installed AC DC BRKT

## Mechanical fixings sundry products

**Slot Lock** (for Micro-Security Slot)  
prod ref **AC SLOCK**

Designed to fit into the industry standard 'Micro Security Slot' as found on most laptop computers and many of the new generation flat screen monitors. The Slot Lock is secured in position by passing the CAB-L-OCK security cable through the leading cable hole in the unit.



## Heavy duty cable system

For those users requiring a heavier duty security cable, our chunky 8mm cable system offers the ideal solution. Based around a clear plastic sheathed multi-strand tensile steel cable, the heavy duty cable system offers a choice of cable lengths and end fittings, equipment attachments and cable anchors. A special shackless padlock provides the locking mechanism.

prod ref **AH C0815**

1.5 metre heavy duty security cable with stop end

prod ref **AH C0820**

2.0 metre heavy duty security cable with stop end

prod ref **AH C0820L**

2.0 metre heavy duty security cable with loop end

prod ref **AH LPT05**

Limpet equipment attachment point for use with 8mm cable

prod ref **AH SPC**

Serial port connector attachment for use with 8mm cable

prod ref **AH EXSB**

Heavy duty expansion slot bracket (not shown)

prod ref **AH MSDAP**

Desk anchor point for use with 8mm cable

prod ref **AH WFP**

Wall / floor anchor point for use with 8mm cable

prod ref **AH SPLK6**

Shackless padlock for use with 8mm cable

prod ref **AH SPLK6KA**

Shackless padlock (keyed alike) for use with 8mm cable



Stop end and loop end cables



from left limpet attachment, serial port connector, desk anchor, wall anchor



**Note** where limpet units (AH LPT05) are used, CAB-L-OCK superbond adhesive will be required to bond to equipment casing. Order prod ref AC ADHESV

**CAB-L-OCK components – locks & locking points**

**Executive limpet attachment** prod ref **AC LPT01**

A bond on equipment attachment unit with integral locking point for the security cable. Units are supplied in randomly keyed format as standard or in keyed alike lock suites as an option. (Bonds on with CAB-L-OCK superbond instant adhesive, circular bond area approx. diameter 2.5"/63mm)



**Vinyl sheathed padlock (30mm)** prod ref **AC PADLK1**

Standard locking mechanism for CAB-L-OCK budget security cable packs. Padlocks are supplied in randomly keyed format (keyed alike lock suite option). The versatile cable junction unit (order separately) functions as a lock off point for the security cable where required.



alternative padlocks

**AC PADLK2** Vinyl sheathed padlock (40mm)

**AC PADLK3** Laminated steel padlock (30mm)

**AC PADLK4T** 4 tumbler combination padlock (40mm)



**Cable junction** prod ref **AC CABJCT**

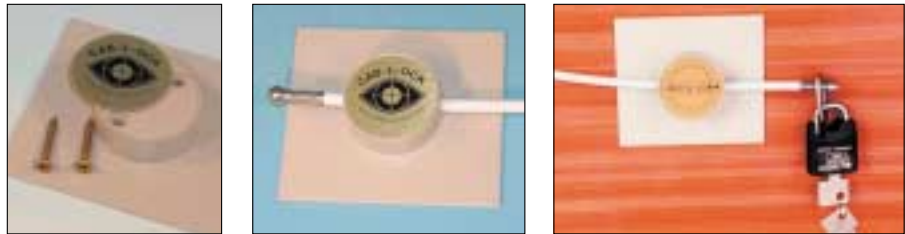
The versatile cable junction unit (ordered separately from padlock) functions as a lock off point for up to two security cables where required.



**CAB-L-OCK components – anchor points for the security cable**

**Executive desk anchor point** prod ref **AC DN/A**

The desk anchor point bonds to the desk surface or modesty panel via its peel and stick adhesive base. Concealed self tapping screws (supplied) can also be used to supplement the adhesive bond.  
(Adhesive area 90 x 100 mm)



**Budget desk anchor point** prod ref **AC BDA**

The desk anchor point bonds to the desk surface or modesty panel via its peel and stick adhesive base. The two security screws supplied can also be used to supplement the adhesive bond.  
(Adhesive area 90 x 50 mm)



**Microsaver desk anchor point** prod ref **AC MSDAP**

The desk anchor point bonds to the desk surface / modesty panel via its peel and stick adhesive base. The two screws supplied can also be used to supplement the adhesive bond. This unit was designed primarily for use with laptop security cable systems.  
(Adhesive area 90 x 100 mm) See also product AC BDA



**Wall / floor anchor point** prod ref **AC WFP**

Supplied with security screws and heavy duty wall plugs, this robust cable anchor point is ideal for use on brick, concrete or wooden surfaces. The one way security screws protect against removal.  
(Overall diameter 100 mm)



**CAB-L-OCK components – equipment attachment points**

**Executive limpet attachment** prod ref **AC LPT02**

A bond on equipment attachment unit for the security cable. Bonds on with CAB-L-OCK Superbond instant adhesive – circular bond area approx. diameter 2.5"/63mm



**Budget limpet attachment** prod ref **AC LPT03**

A bond on equipment attachment unit for the security cable. Bonds on with CAB-L-OCK Superbond instant adhesive – circular bond area approx. diameter 2.0"/50mm



**Mini anchor pad attachment** prod ref **AC MINAP**

A bond on equipment attachment unit for the security cable. Bonds on with CAB-L-OCK superbond instant adhesive. Bond area approx. 2.5" x 0.75"/60 x 19mm



**Expansion slot bracket attachment**

prod ref **AC EXSB**

A mechanical attachment unit which utilises any spare expansion slot on your PC.



**Monitor / VDU trap**

prod ref **AC VDUTRP**

A mechanical attachment unit which secures the monitor to the security cable via the electrical connection cable.



**PC (serial / parallel port) 'D' connector bracket**

prod ref **AC DCBRKT**

Re-usable cable attachments of different lengths which screw to the threaded pillars of any spare serial or parallel port (screws supplied).



**Slot lock** (for micro-security slot) prod ref **AC SLOCK**

Designed to fit into the industry standard 'micro security slot' as found on most laptop computers and many of the new generation flat screen monitors. The slot lock is secured in position by passing the security cable through the leading cable hole in the unit.



**Case lock** prod ref **AC CASLCK**

Designed to prevent the unauthorised removal of PC internal components (chips, etc) on PCs with slide opening cases.



**Screw trap** prod ref **AC SCTRAP**

Designed to prevent the unauthorised removal of PC internal components (chips, etc) on PCs with screw secured cases.



**Cable trap** prod ref **AC CBLTRP**

The cable trap is designed to prevent the theft of, or unauthorised removal of, low cost PC peripheral devices such as the mouse, speakers, microphone or web camera. Simply slip the electrical connection cable of the device to be secured through the special metal cable trap, then pass the security cable through the protruding loop and lock off. Cutting the electrical cable to steal the secured device would render it virtually valueless.



**CAB-L-OCK components – security cables & accessories**

**The CAB-L-OCK security cable**

The multi strand tensile steel cable is sheathed in a non scratch vinyl sheathing and has stainless steel fittings at each end. The arrowhead shaped leading end is designed to pass through all CAB-L-OCK components whilst the oversize ball fitting on the trailing end prevents the cable pulling right through.

- prod ref **AC C060** security cable 0.60 metres
  - prod ref **AC C095** security cable 0.95 metres
  - prod ref **AC C145** security cable 1.45 metres
  - prod ref **AC C190** security cable 1.90 metres
  - prod ref **AC C290** security cable 2.90 metres
- note: any length cable available to order*



**Cable junction** prod ref **AC CABJCT**

As shown by pictures (clockwise), the versatile cable junction can be used to form a locking loop in the leading end of the security cable, lock off a security cable at the last component on the security system, lock off one or two cables, form a closed loop in the trailing end of the cable, or form a link to allow the operational cable length to be extended by adding an additional cable(s).



## CAB-L-OCK components – sundry items

### CAB-L-OCK superbond adhesive prod ref AC ADHESV

Specially formulated superbond instant adhesive provides a superpower bond between CAB-L-OCK components and equipment casings. Supplied in a 5gm safety bottle to prevent accidental spillage.



### Keyed alike lock suite option prod ref AC KALK

Where multiple security systems are in use, to simplify key management, locks can as an option be supplied in a 'keyed alike' lock suite (i.e. all locks operate from a single key pattern).



The CAB-L-OCK product range is under continuous development and expansion, please visit the Insight Security website for new additions [www.insight-security.com](http://www.insight-security.com)